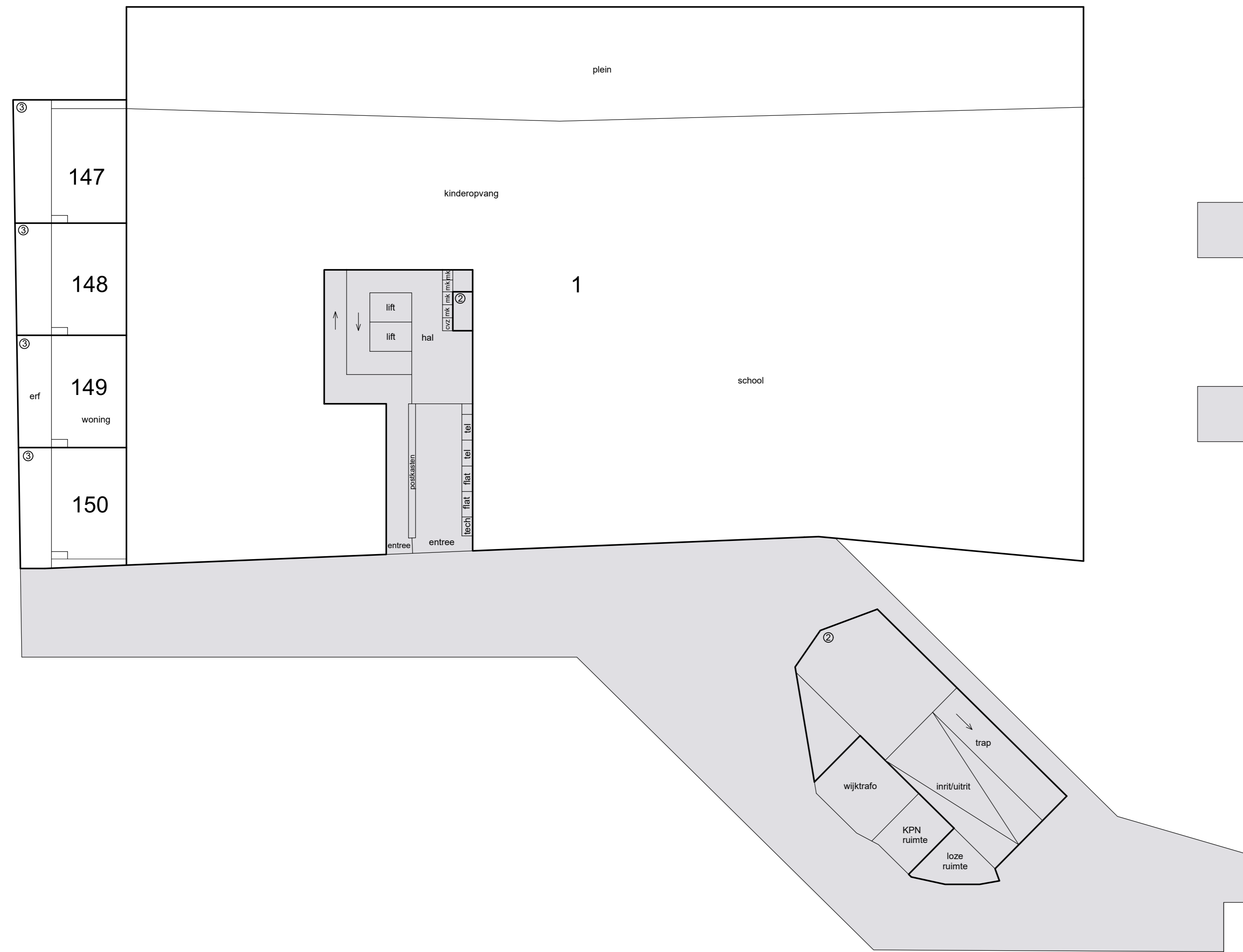
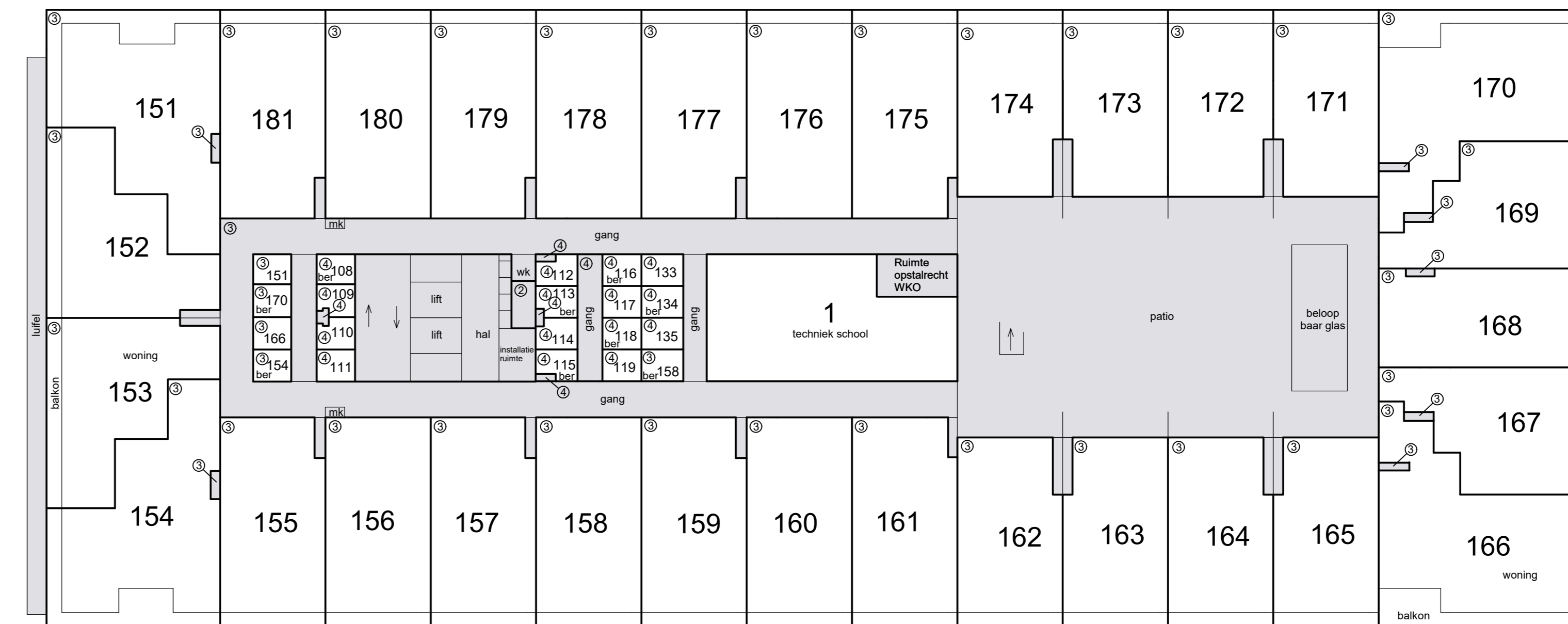


Situatie 1: 1000 Sloten (Noord-Holland) K 2796, 4485, 4551, 4553, 4554, 4555, 4557

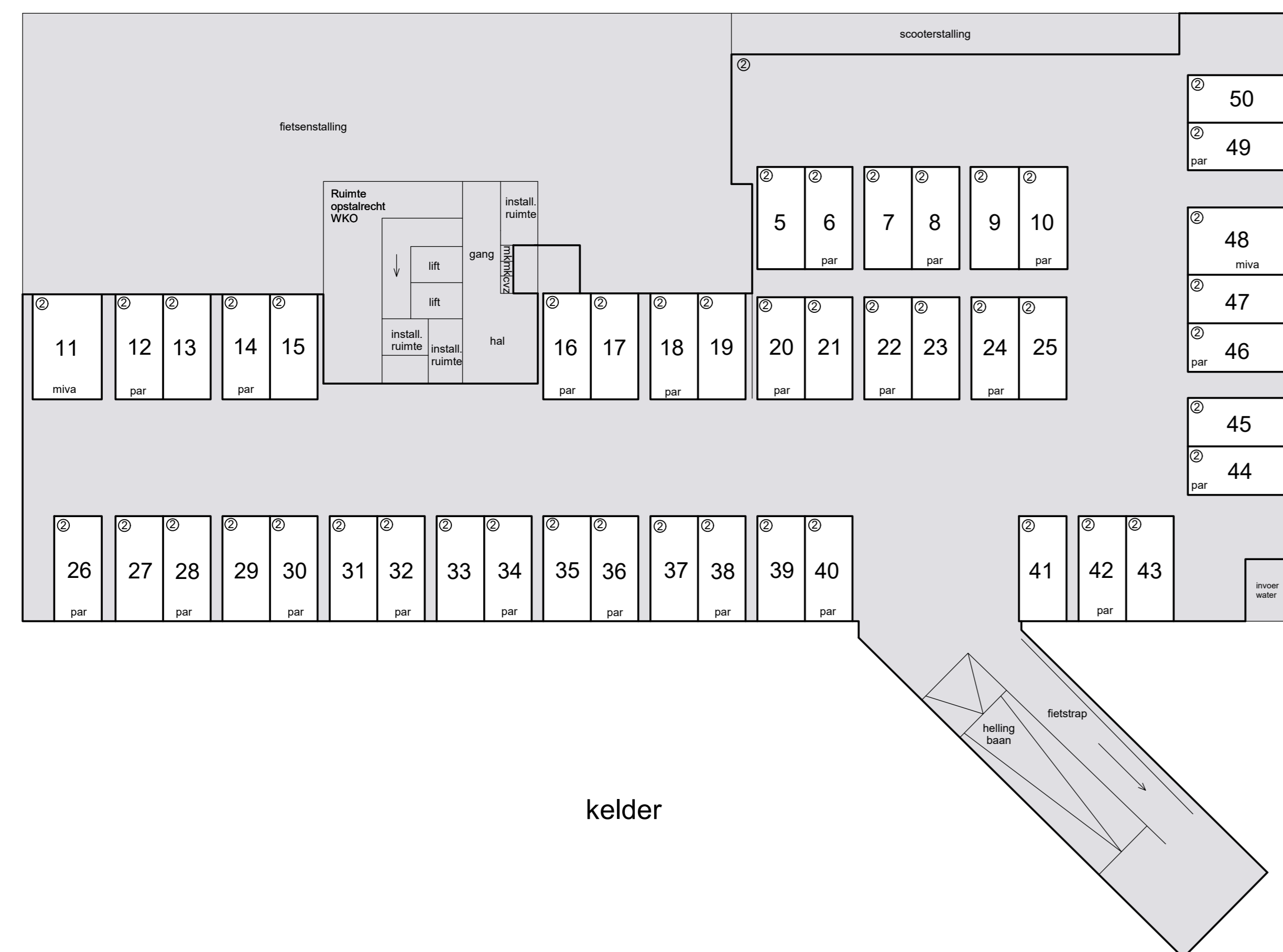
Schaal 1 : 200
 = Gemeenschappelijk
 Tekening bestaat uit 3 bladen
 Blad 1



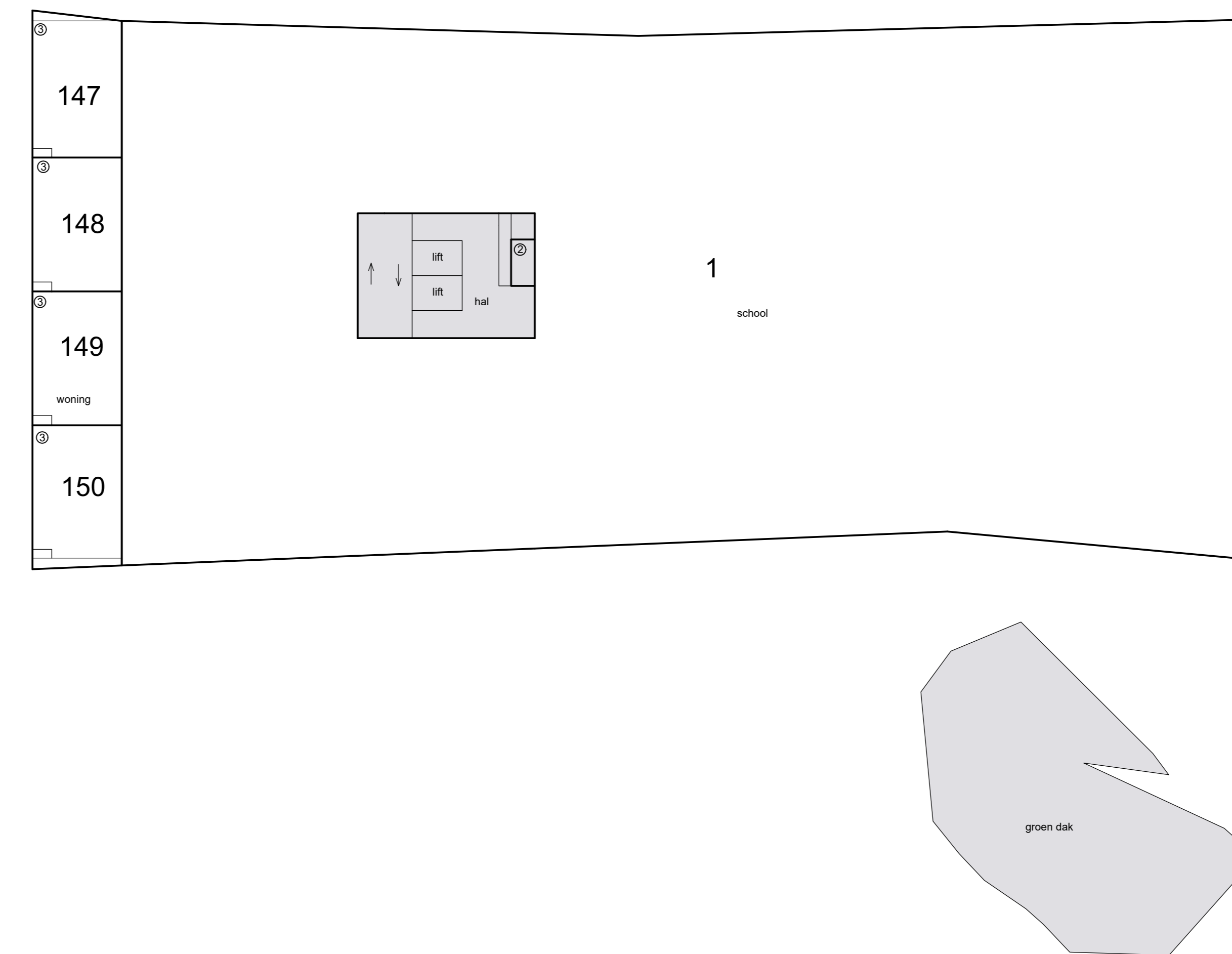
begane grond



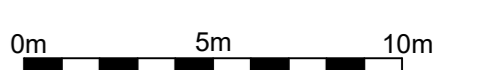
2e etage

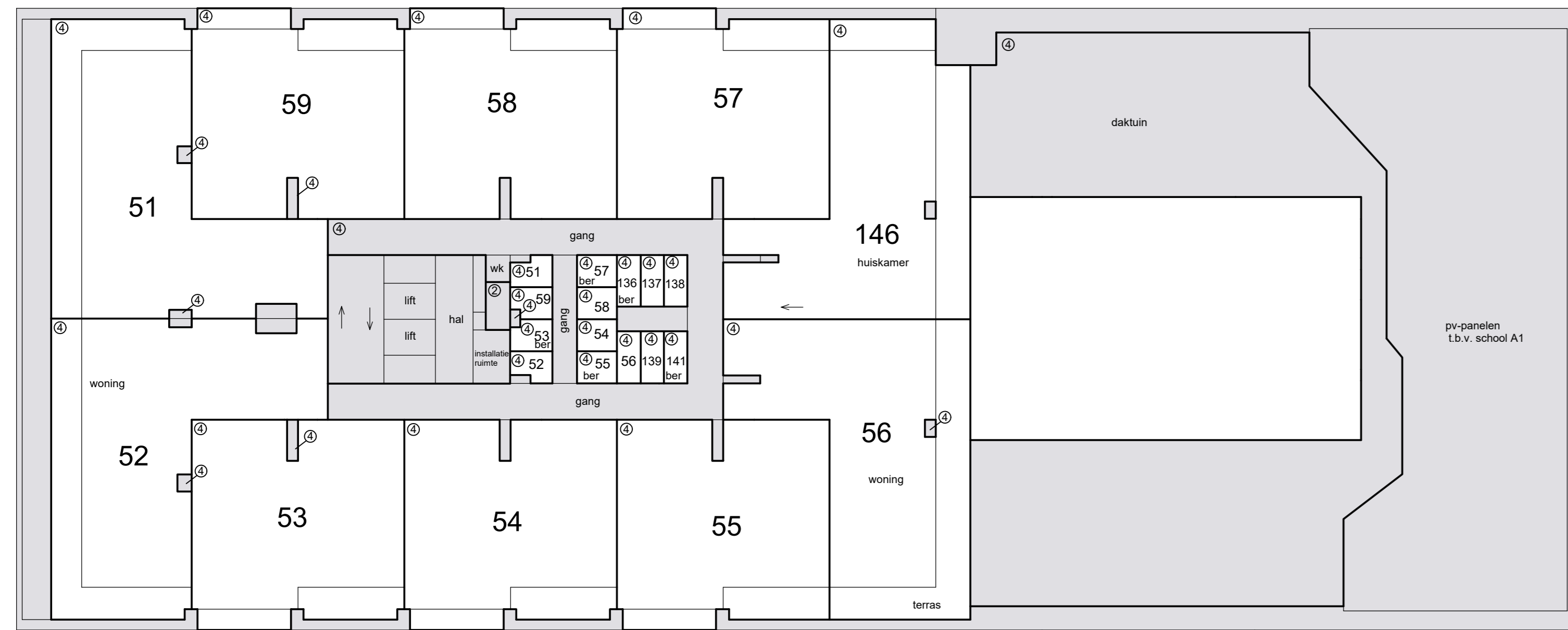


kelder

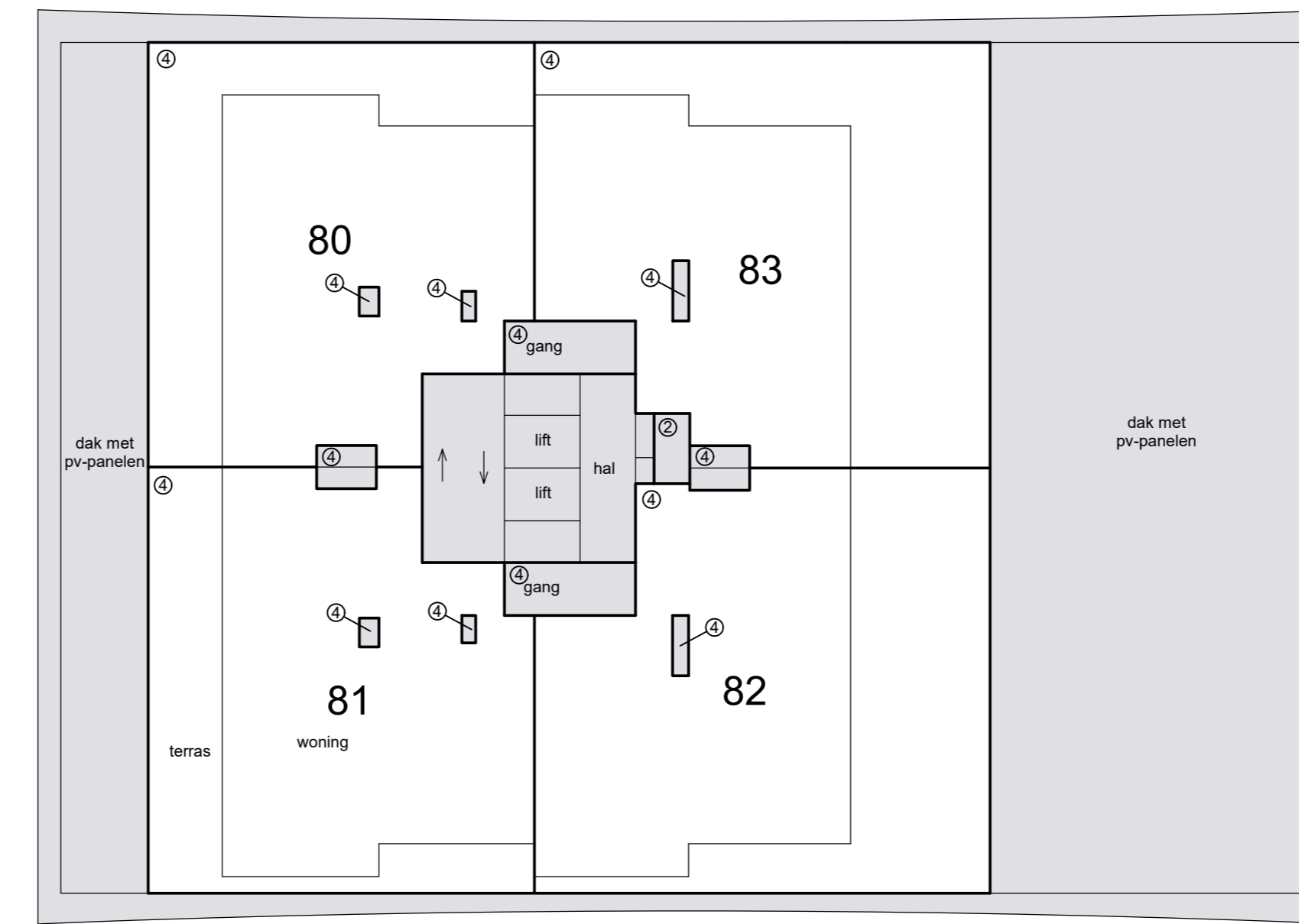


1e etage

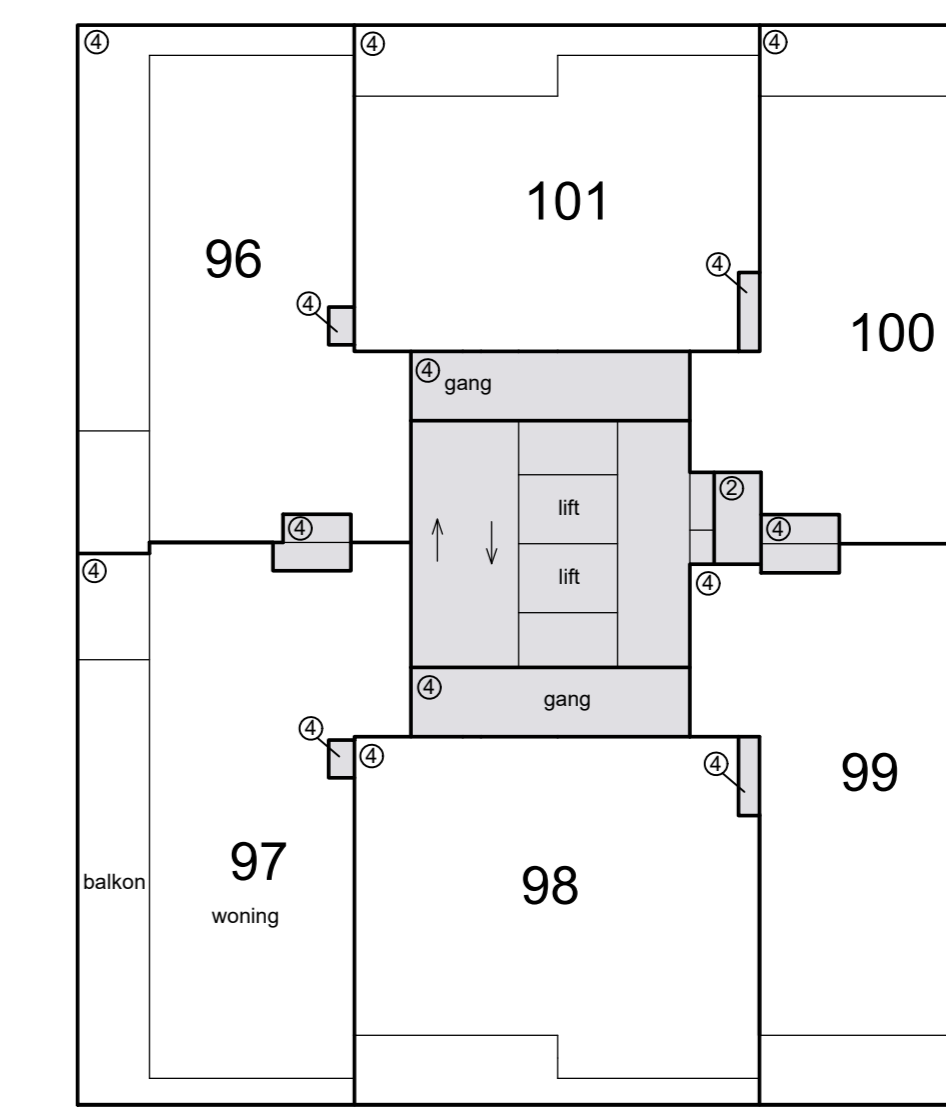




5e etage

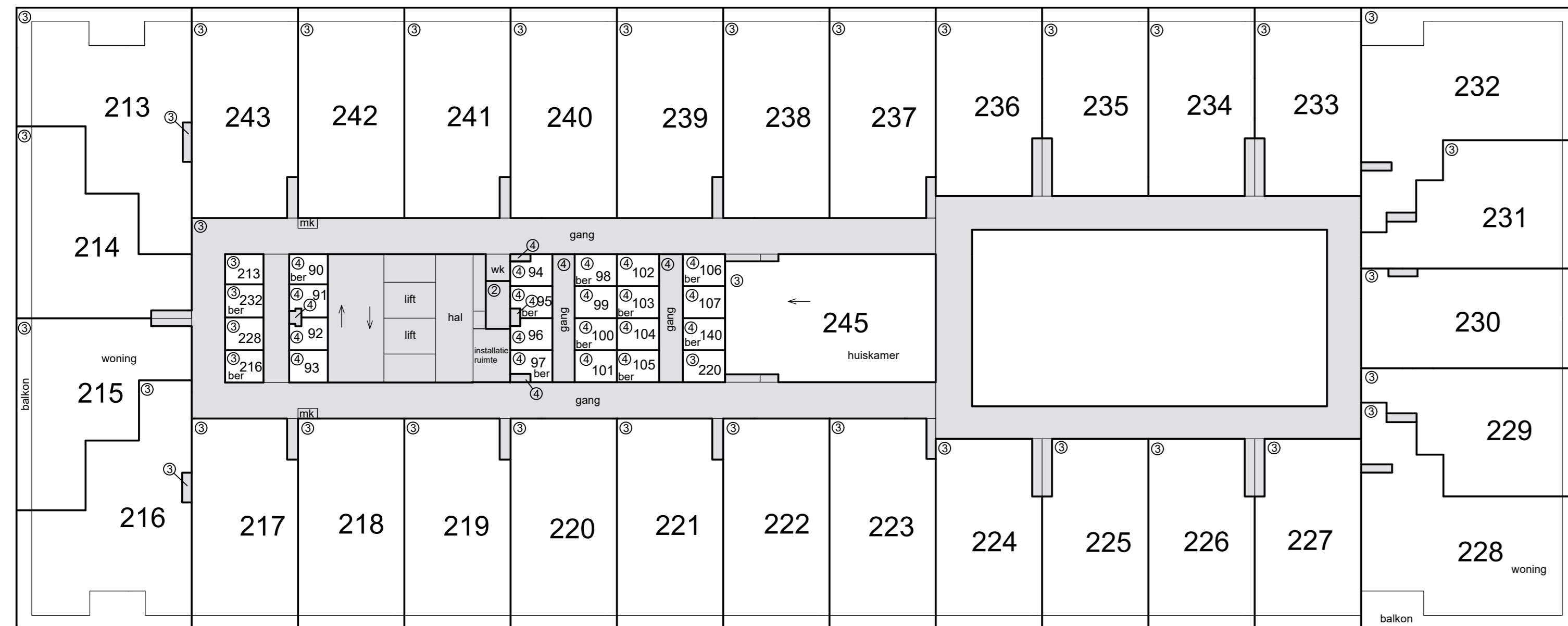


8e etage

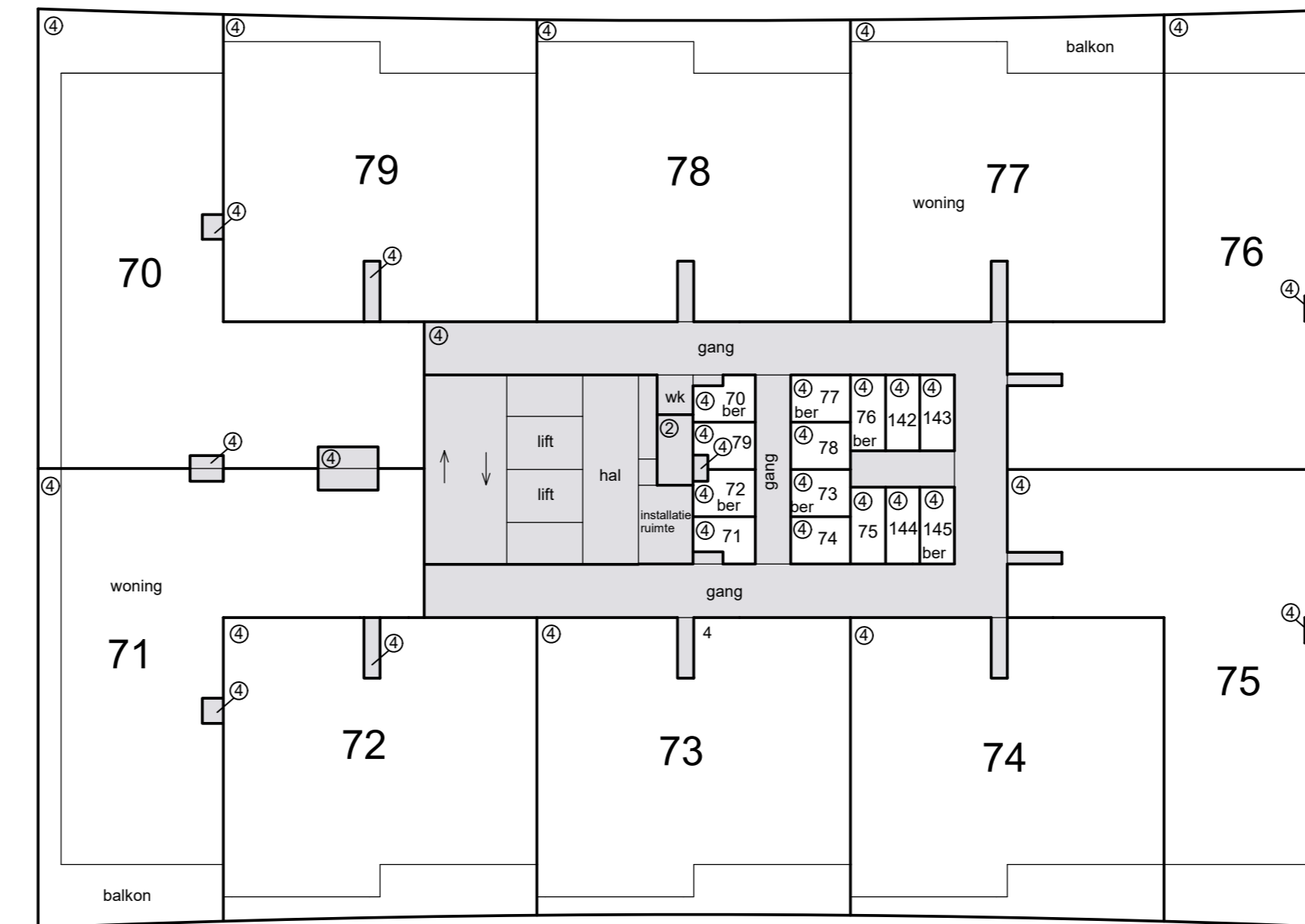


11e etage

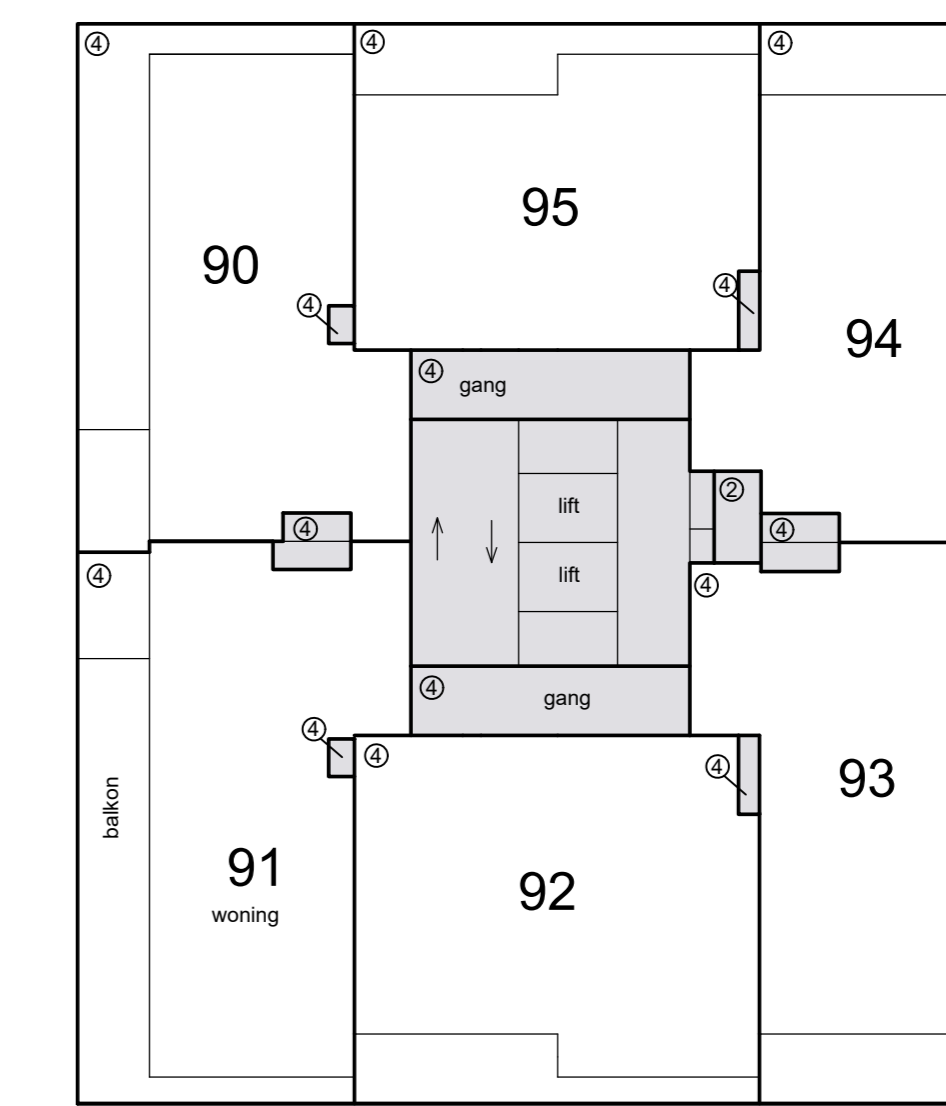
Schaal 1 : 200
 □ = Gemeenschappelijk
 Tekening bestaat uit 3 bladen
 Blad 2



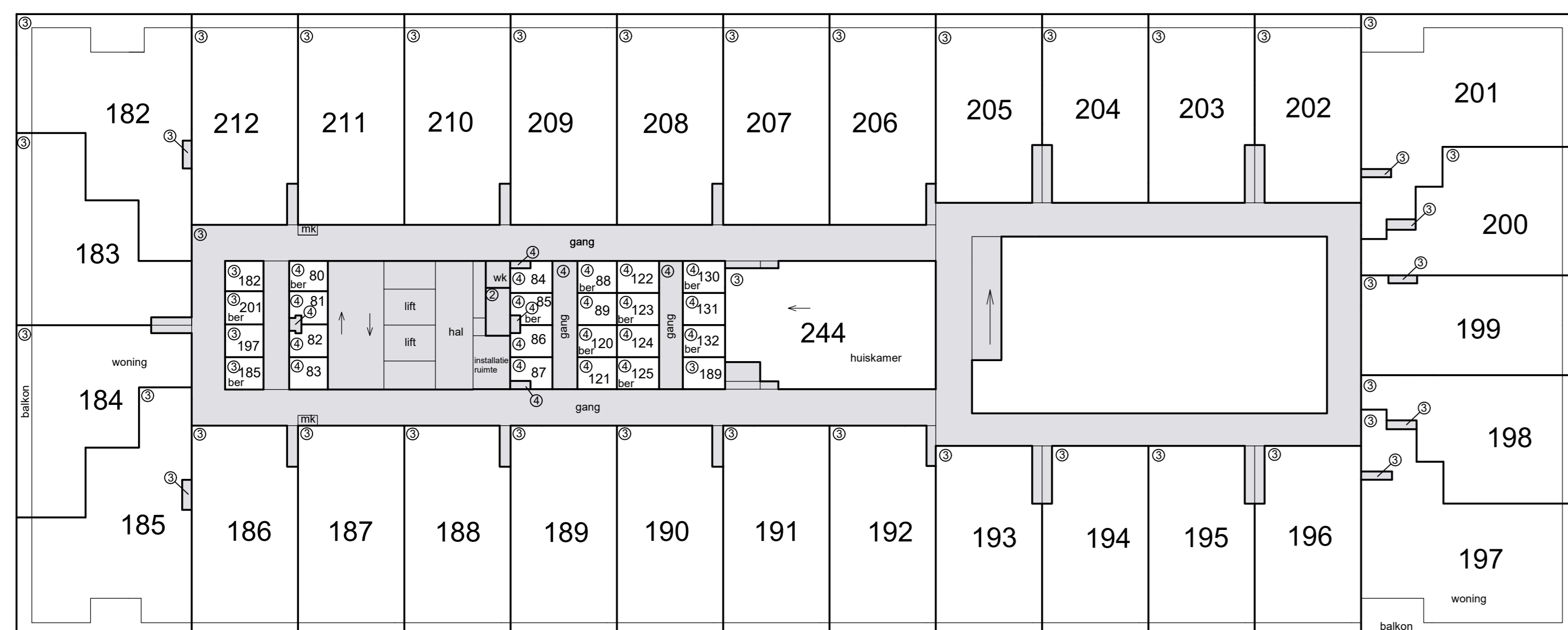
4e etage



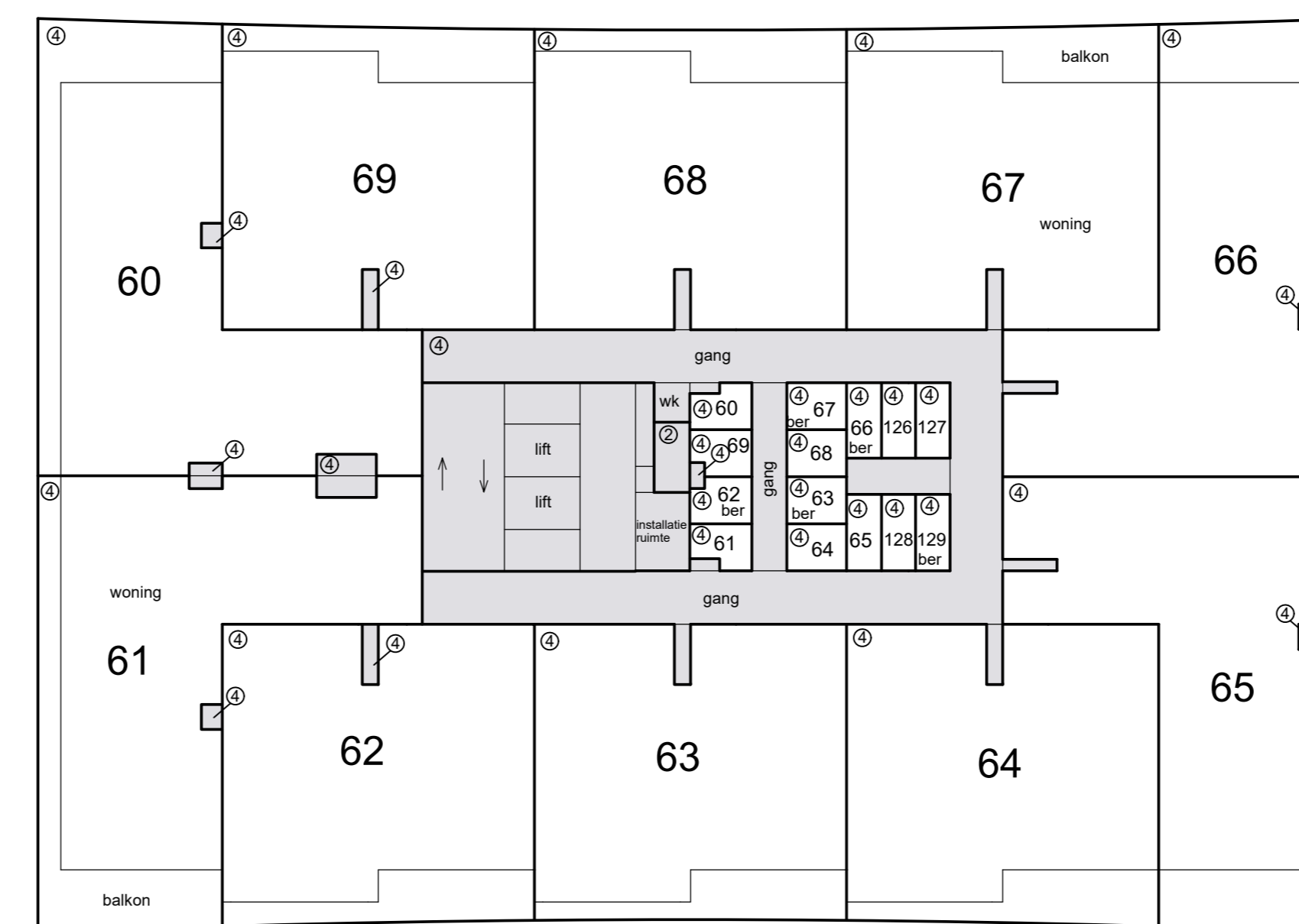
7e etage



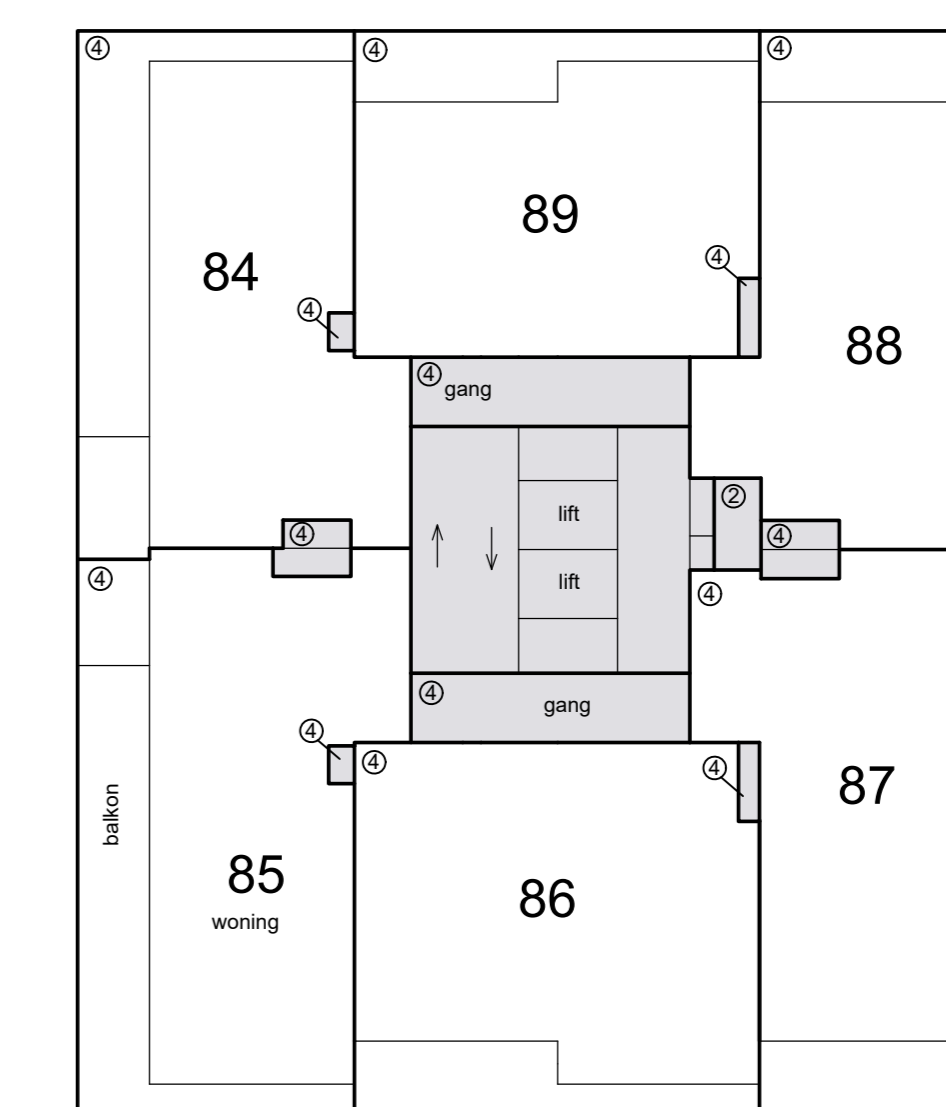
10e etage



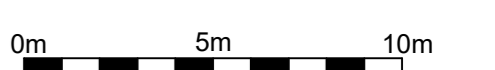
3e etage



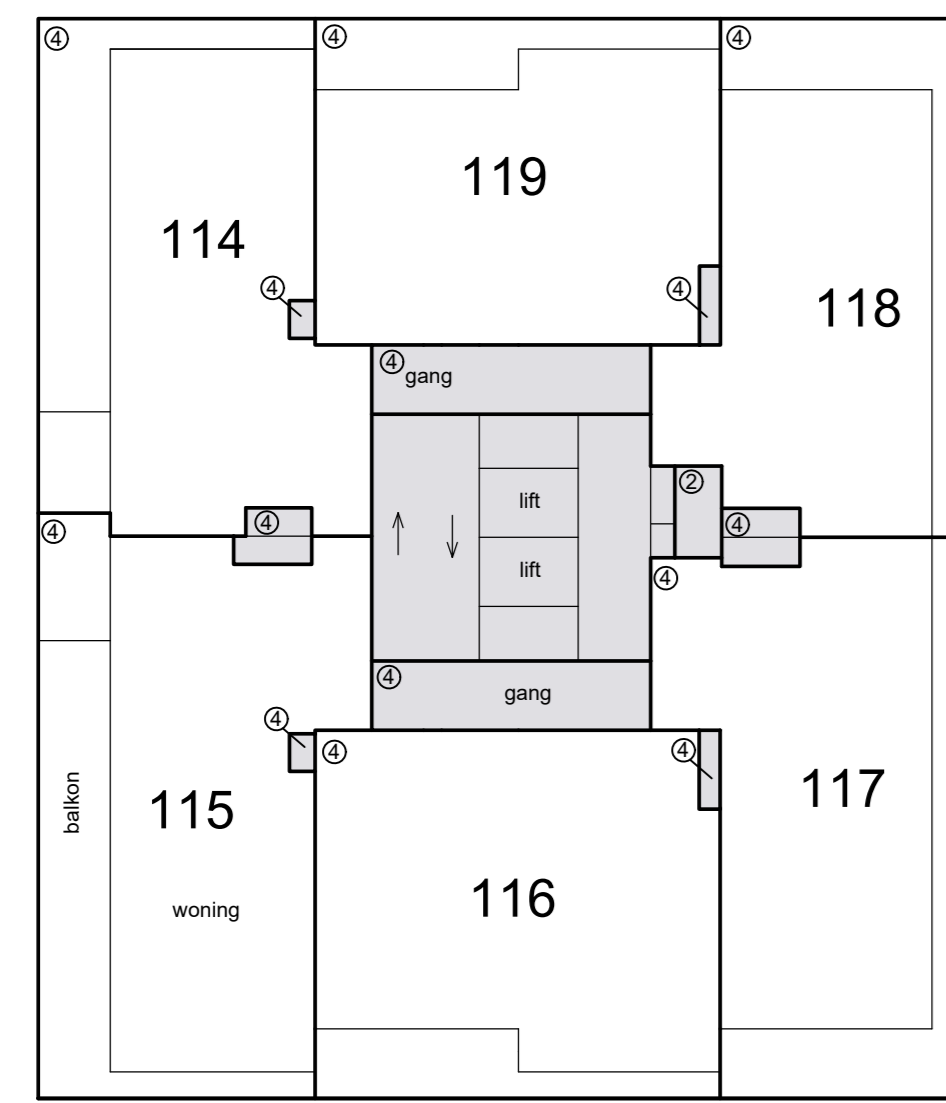
6e etage



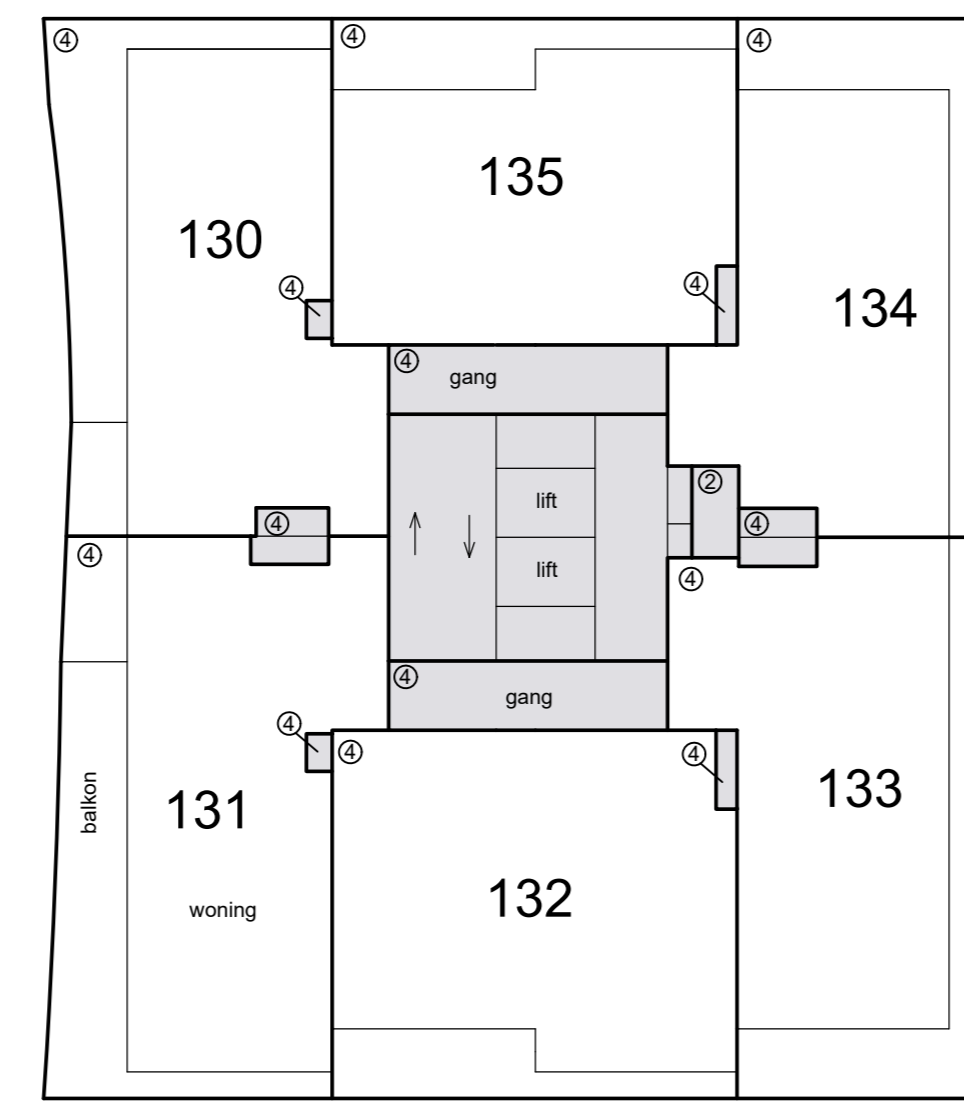
9e etage



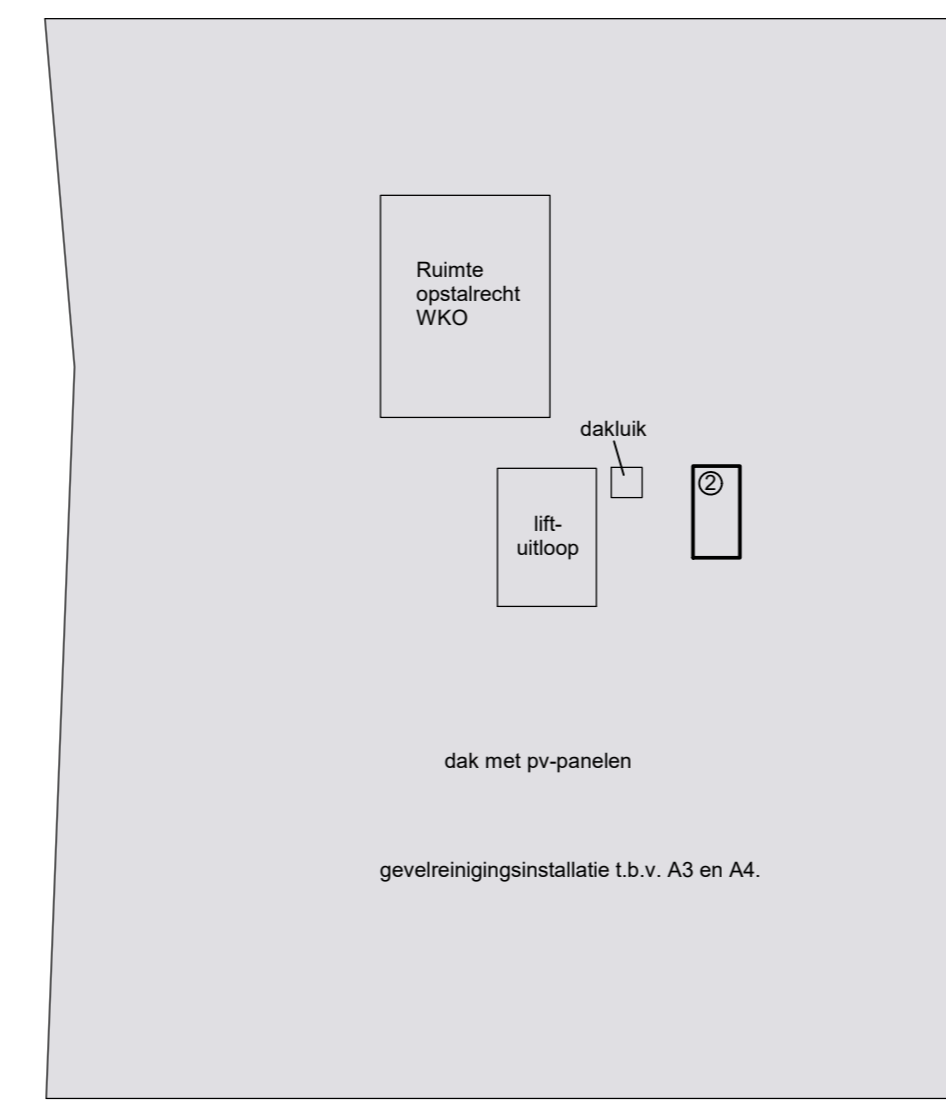
Schaal 1 : 200
 = Gemeenschappelijk
 Tekening bestaat uit 3 bladen
 Blad 3



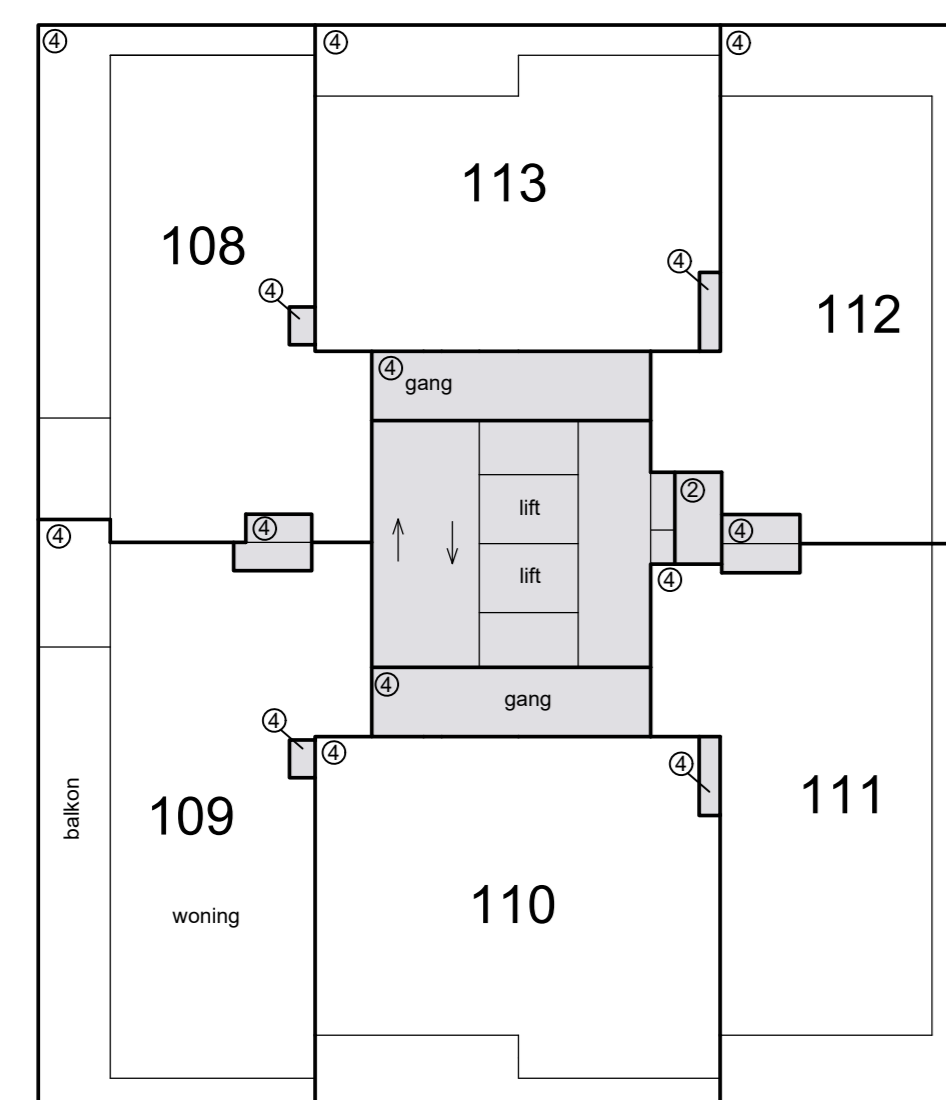
14e etage



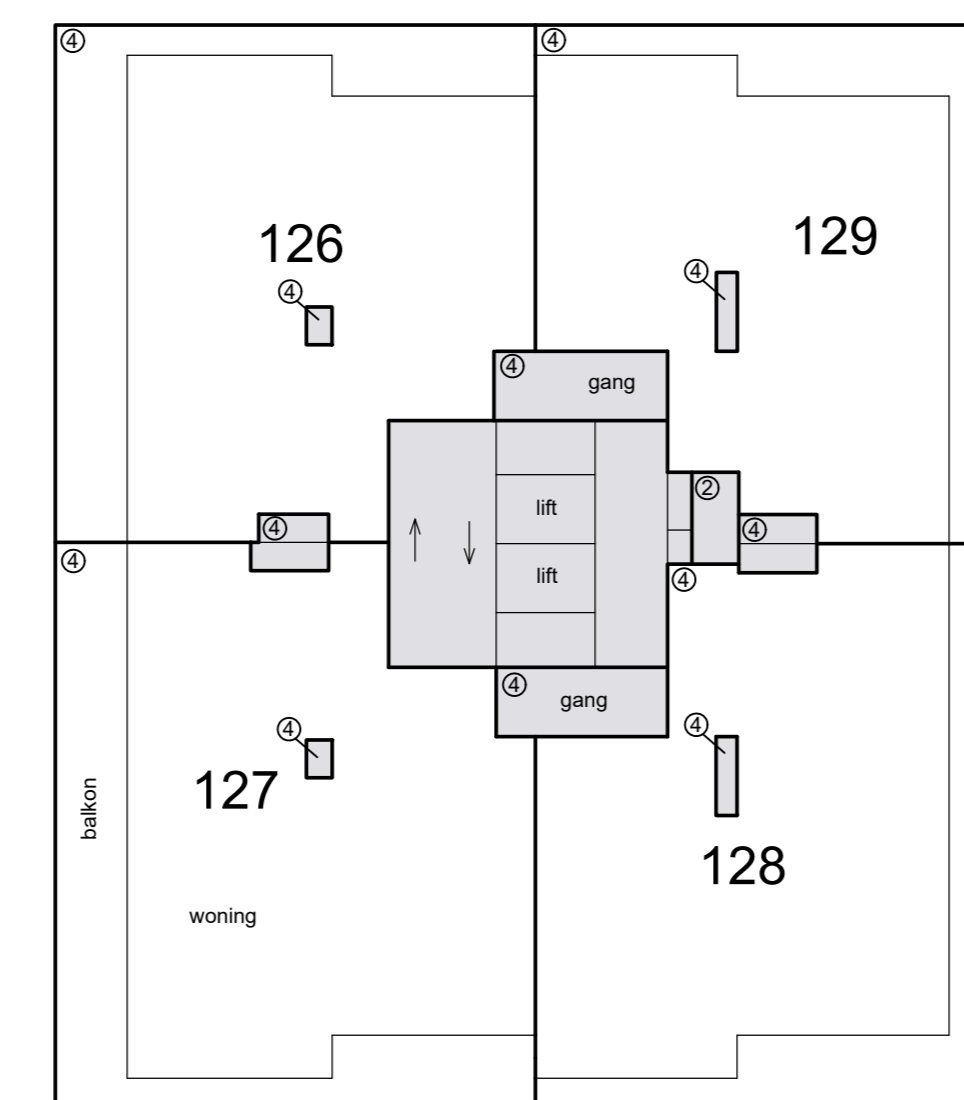
17e etage



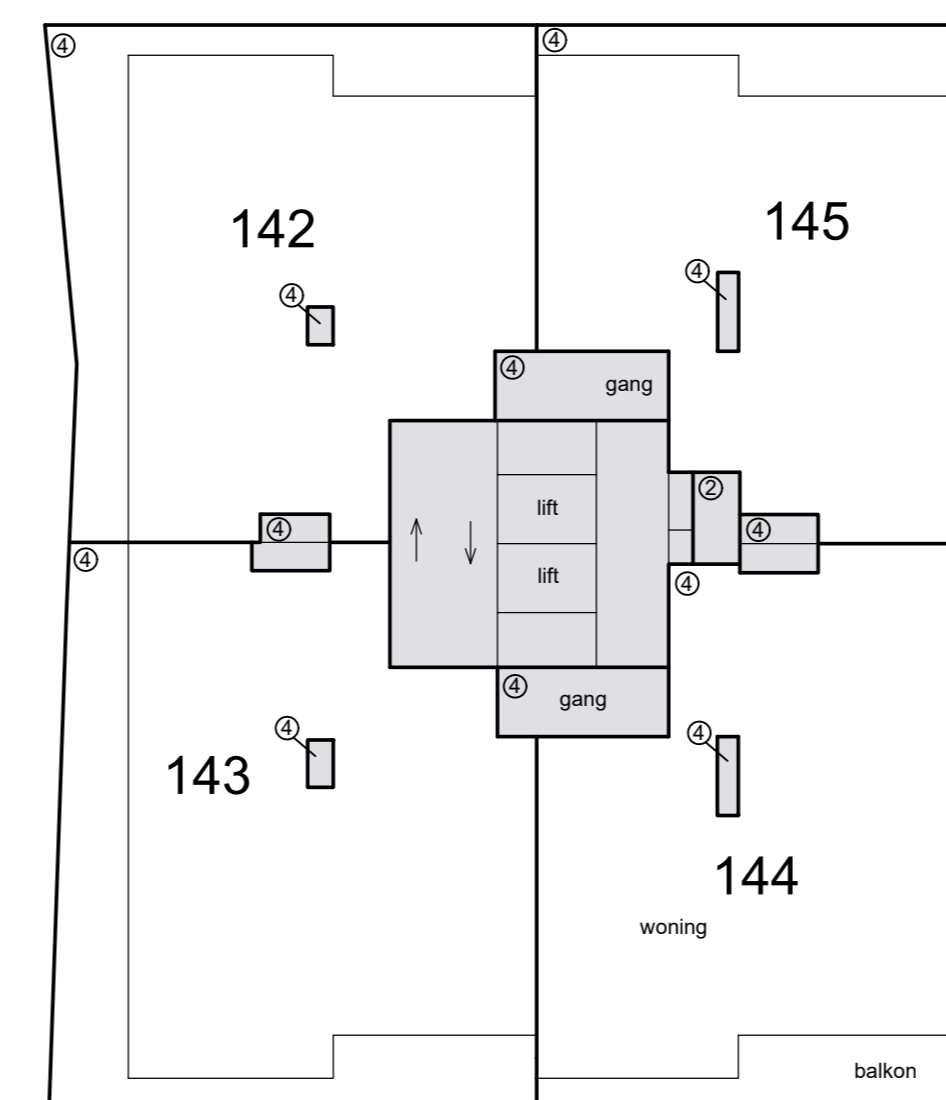
dak



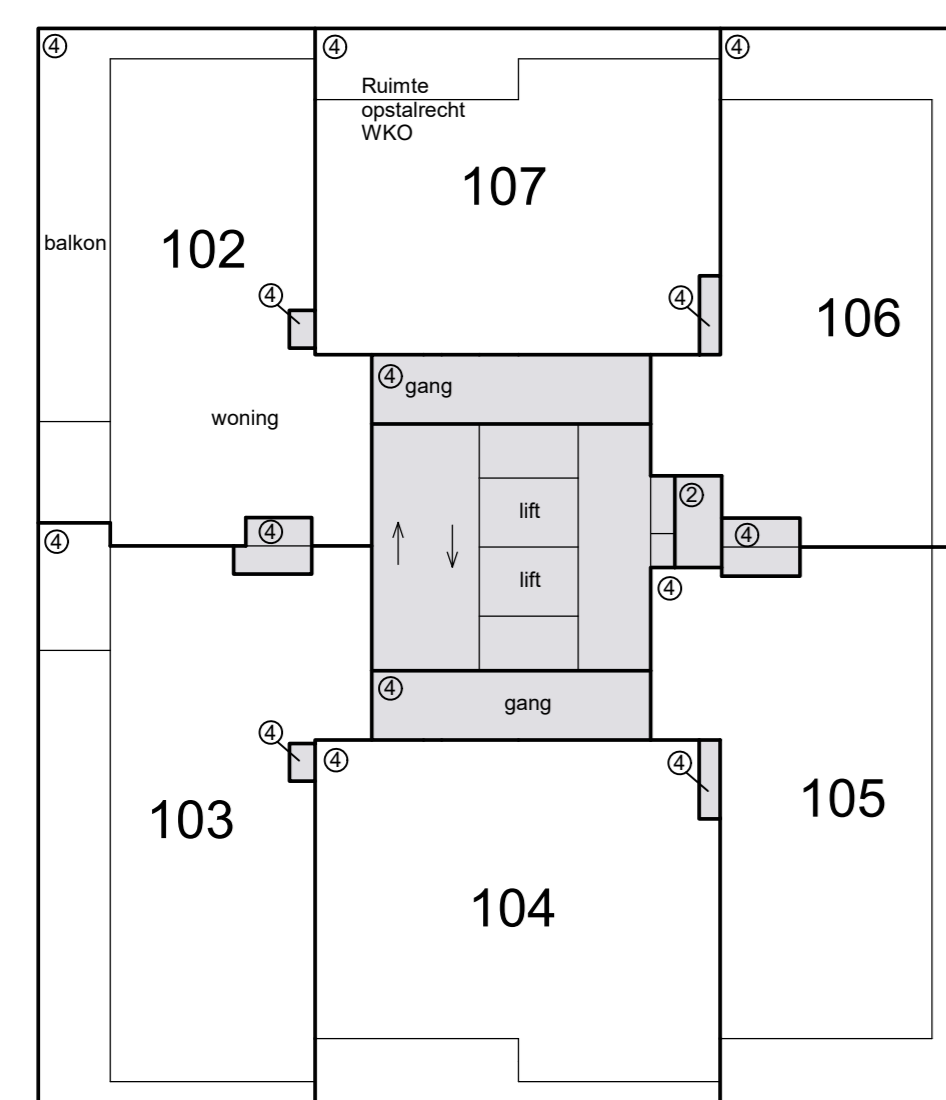
13e etage



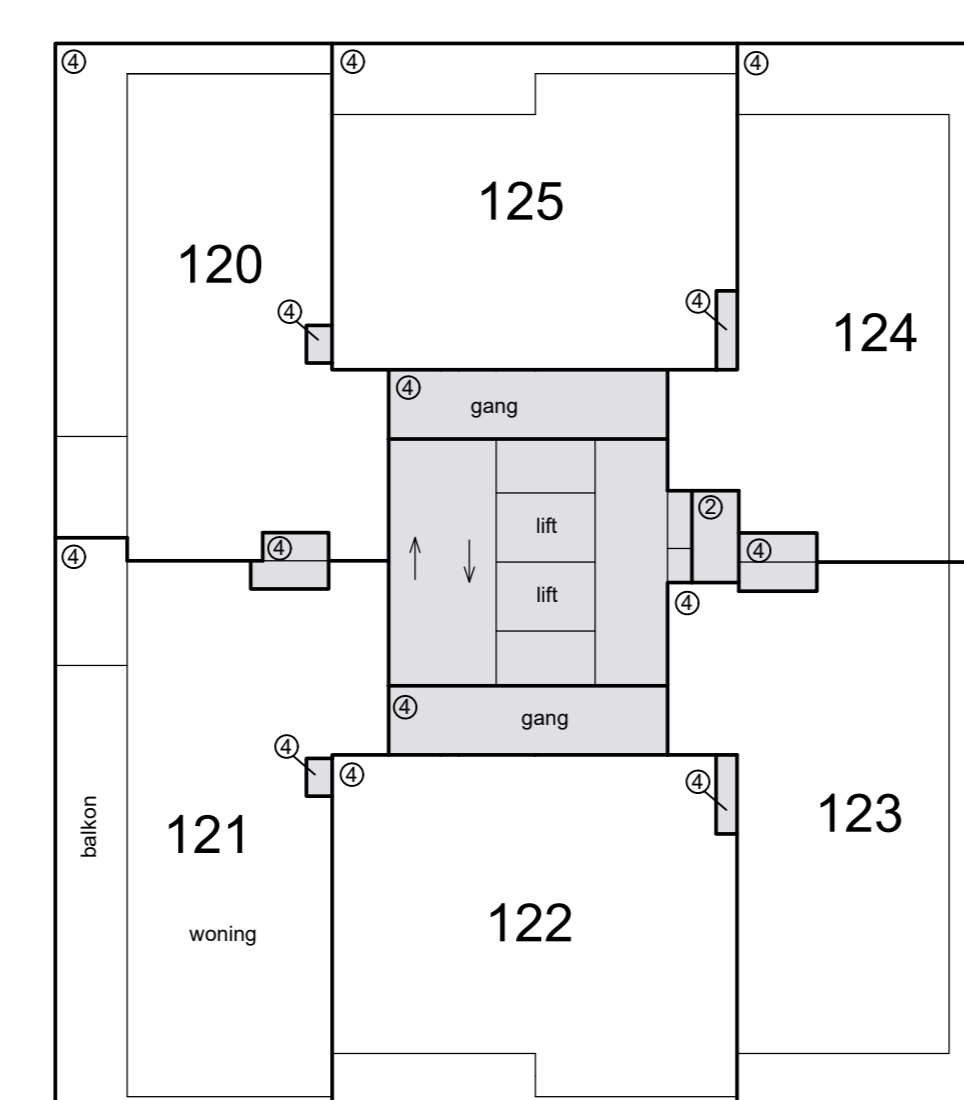
16e etage



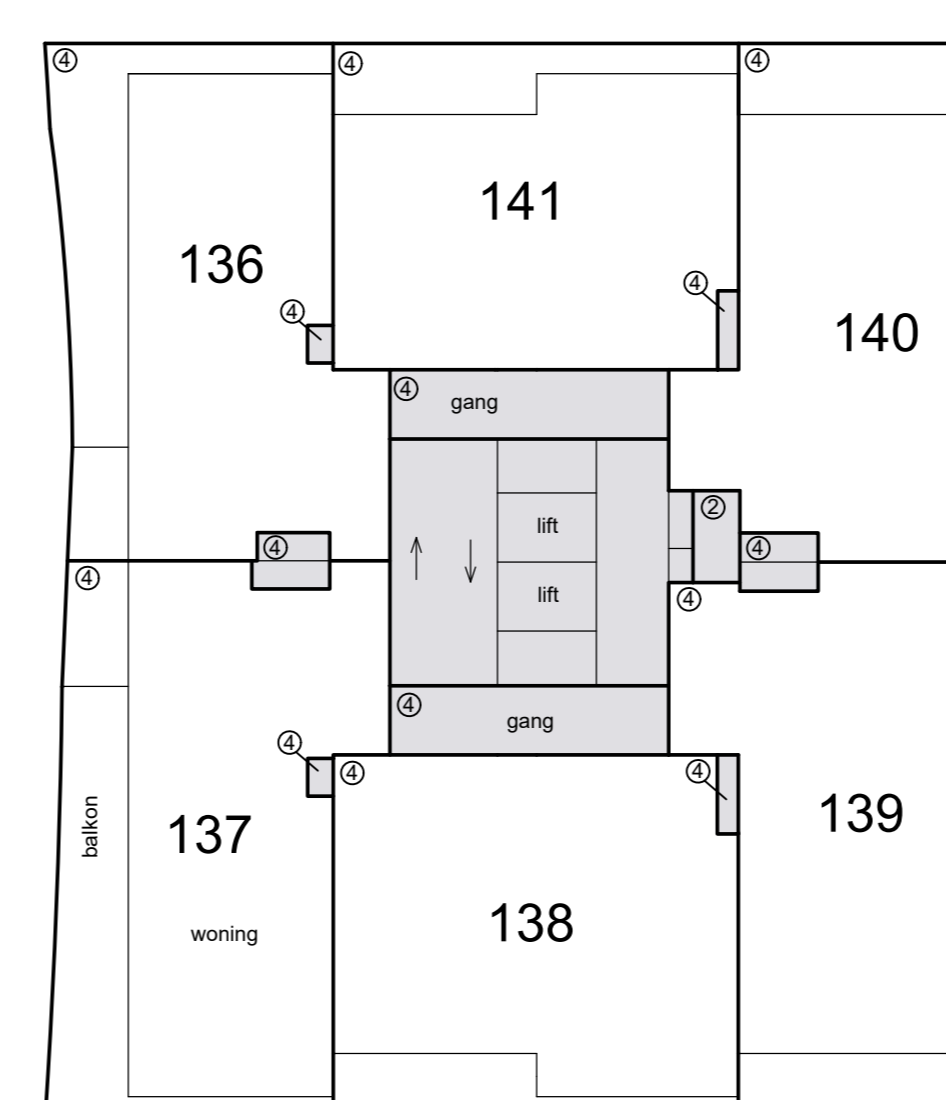
19e etage



12e etage



15e etage



18e etage

